



Planning Strategy Lead Candidate Pack



Make
a
difference
Work for your
local council



workplace
wellbeing
CHARTER

DARTFORD
BOROUGH COUNCIL

About the role



Planning Strategy Lead

Directorate – Growth and Community

Department – Planning Services

Grade – L

Salary – £65,100 Per Annum, increasing to £68,895 Per Annum following 12 months satisfactory performance

Hours - 37 hours per week – Monday – Friday

About the role

Are you in planning strategy or infrastructure and seek an influential new senior role? Or are you currently in local government development management with strategic and political skills and experience, and are looking for a fresh challenge? Join Dartford, the second fastest growing Borough in the country, and take the lead.

We are looking to sustain our high growth and deliver our up-to-date Local Plan through new supporting policy and infrastructure, and maximising benefits from our multi-million pound CIL funding. You will have in-depth planning strategy and infrastructure planning expertise, through significant statutory Plan preparation experience, infrastructure policy work or suitable strategic public sector development management experience.

Dartford is the Kent Borough adjoining London on the River Thames. The area is both urban and rural, including Ebbsfleet Garden City and Bluewater shopping centre, but also marshland, heath, and Ancient Woodland. Dartford (alongside Arup) is the proud RTP1 Silver Jubilee Cup award winner for the Lower Darent Riverside Strategy.

This post is considered by DBC to be a customer-facing position. The Council therefore has a statutory duty under Part 7 of the Immigration Act (2016) to ensure that post holders have a command of spoken English sufficient for the effective performance of the job requirements.

Skills, Knowledge and Experience:

We are looking for an innovative and flexible thinker keen for a challenge in a positive and integrated Planning & Place division. Demonstrable experience of policy-based decisions on large scale infrastructure investment or developer contribution expenditure prioritisation is required. Substantial knowledge of national planning policy / local plan legislation and reform is necessary. You will have strong quantitative, analytical and written capabilities, a creative approach to problem solving and good leadership and communication attributes. You will be managing and working with an enthusiastic team, whilst reporting to and being supported by the Head of Planning Strategy.

We offer hybrid working arrangements which seek a balance of home and office-based working. Part-time working arrangements will be considered for the right candidate, please call if you wish to discuss your circumstances.

Conveniently located, the Borough's connections are more than just the Dartford crossing and M25. Dartford rail station (adjacent to the Council offices) is just 11 minutes travel from the Elizabeth Line, and has Thameslink and direct links to London Charing Cross and Victoria. We have good buses including TfL services and Fastrack rapid transit.

If you would like to speak about this post please contact **Mark Aplin, Head of Planning Strategy** on 01322 343202.



workplace
wellbeing
CHARTER

DARTFORD
BOROUGH COUNCIL

Disability Confident Employer

DBC is Disability Confident Employer and welcomes applications from candidates with a disability.

We operate a Guaranteed Interview to any candidate with a disability who meets the minimum criteria for the role. If you have a disability and are applying for a particular role, please ensure that you indicate this on your application form, and advise us of any reasonable adjustments which you may require.

A disability under the Equality Act 2010 is defined as a physical or mental impairment which has a substantial and long term adverse effect on your ability to carry out normal day to day activities.

Care Leavers

We will offer an interview to care leavers who meet the minimum criteria for the post. If you are a care leaver, you must inform us of your care leaver status at the time of your application.

Armed Forces

As part of the Council's commitment to the Armed Forces Covenant and to ensure that ex-armed forces personnel are not disadvantaged as a result of their service, veterans of the armed forces and/or their spouses/civil partners, applying for a job at the Council will be guaranteed the offer of an interview, provided that:

- They or their spouse/civil partner are currently serving in the armed forces and are within 12 weeks of their discharge date
- They or their spouse/civil partner were in long-term employment with the armed forces within the last five years
- They meet the essential criteria for the advertised role
- They confirm that they wish any application for a post at the Council to be considered under the guaranteed interview scheme.

How to apply

Please apply via:

<https://www.dartford.gov.uk/by-category/jobs-and-careers/job-vacancies-at-the-council>

Do not send your CV – only fully completed application forms via the link above will be accepted

We reserve the right to close this vacancy before the advertised closing date. Please apply early to avoid disappointment.

Shortlisted?

Shortlisting and selection will be based on the job profile and experience required. You will need to address these requirements in your application drawing on any experience you have gained at work or in a voluntary capacity. You should give examples of how you meet the criteria outlined in the job profile and the Council's Core Behaviours. If you are unable to explain how you meet the requirements of the role, we may not be able to shortlist you.

Closing date:

23:59 28th June 2026

Interview date:

Week Commencing 13th July 2026



DARTFORD
BOROUGH COUNCIL

About the Council



Why Dartford

'Dartford is a place of quality, choice and safety. A place where great communities, concern for the environment and a successful economy support people who want to live, work and enjoy leisure time.'

Dartford Borough Council is one of the most exciting places to work in the region. Not only are we working on some special projects to improve life in the borough but we also have one of the most accessible offices in the country.

Our Commitment to Equality and Diversity

Dartford Borough Council is committed to equal opportunities policies and action to ensure that the best candidates for any post are appointed irrespective of age, disability, gender reassignment, marriage and civil partnership, pregnancy and maternity, race, religion and belief, sex and sexual orientation. We operate a name-blind recruitment process and remove candidates' personal information to ensure that people will be shortlisted for interview on merit.

Our aim is to remove barriers to employment, promotion and development so that all employees have equal access to these on the basis of ability and the requirements of the job.

We are committed to challenging inequality, discrimination and disadvantage and to achieving the highest standard of employment practice. Equality of opportunity for all sections of the community and workforce is an integral part of this commitment, and we welcome applications from all sectors of the community.

The Council has signed up to the Disability Confident Scheme. Through Disability Confident, we are working to ensure that disabled people and those with long term health conditions have the opportunities to fulfil their potential and realise their aspirations. We are committed to interviewing all disabled candidates who meet the minimum criteria for the role. In addition the Council will where possible make reasonable adjustments to ensure the interview process is accessible to disabled candidates.



workplace
wellbeing
CHARTER

DARTFORD
BOROUGH COUNCIL

Getting to us

Civic Centre
Home Gardens
Dartford
Kent DA1 1DR

By car...

The Civic Centre can be accessed via A206 to the north, A282/M25/M20 to the east and the A2 to the south. The A226 Dartford Road links Bexley to Dartford Town Centre. The Council offers free car parking for staff.

By train...

Dartford Civic Centre is situated opposite Dartford station. Dartford is part of the TfL Oyster card area and there are regular and frequent services from Central London (Charing Cross, Victoria and London Bridge). In the opposite direction there are regular services to Gravesend and the Medway Towns with connections to Canterbury and the Kent Coast.

By bus...

Good bus services serve Dartford town centre, including TfL buses, and the Fastrack rapid transit system. Bus stops in Home Gardens, two minutes walk to the Civic Centre, are served by:

- TfL bus routes 96, 428 and 492
- Fastrack bus routes A, B & C
- Arriva Sapphire bus services routes 480 & 490 between Dartford Town Centre and Gravesend.

By bike...

Dartford Town Centre lies on strategic cycle routes. View the routes on the Explore Dartford Maps:

https://explorekent.org/wp-content/uploads/2020/06/EK-DARTFORD_PRINT.pdf

[Link to map and more info](#)

Dartford Borough Council Civic Centre



Core Behaviours

Values are a key component of a healthy workplace culture because they clarify how the Council and its staff should behave and help to ensure that everybody is working towards the same goals. They provide the framework within which employees can test decisions, accomplish tasks, and interact with others.

The Council's core behaviours reflect the special qualities that attract, engage and retain the talent that we want; and will be used to shape our culture by influencing the work we do, and how we do it. These behaviours focus the way we expect employees to approach daily business practices, conduct communications and interact with one another.

The Council has five core behaviours that guide the way we think and act as an organisation, and each member of staff is responsible for incorporating them into their day to day roles.



Core Behaviours

Communication

Demonstrated by:

- Actively listening to customers and colleagues and asking questions to provide clarity
- Seeking to understand customer and colleague needs and proactively looking for ways to exceed expectations
- Being clear, concise and courteous
- Providing regular and timely feedback
- Leaving a positive impression of the Council

Respect

Demonstrated by:

- Creating trusted relationships with customers, colleagues and communities to achieve mutual goals
- Treating customers and colleagues with respect and dignity and valuing others as individuals
- Learning from others and valuing differences
- Being thoughtful, tactful and considerate
- Acting with integrity, loyalty and trust

Accountability

Demonstrated by:

- Taking the initiative and ownership of our decision, actions, performance and behaviour
- Learning from our mistakes and seeking out opportunities to improve
- Delivering on promises to customers and colleagues
- Being proud of what we do

Adaptability/Flexibility

Demonstrated by:

- Displaying a 'can do' attitude and being innovative
- Embracing change
- Getting out of our comfort zones and creating our own opportunities
- Looking for the positive in every situation
- Challenging negativity and bad behaviour

Collaboration

Demonstrated by:

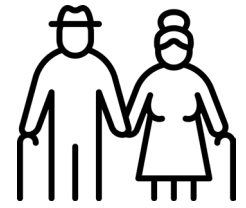
- Sharing ideas and challenges with our colleagues and actively seek out their opinion
- Working together beyond departmental boundaries to achieve superior results
- Ensuring everyone has an equal opportunity to share and contribute ideas
- Being part of the solution



Total Reward Package

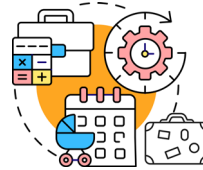
Pension

We are part of the Local Government Pension Scheme (LGPS). There is a 50/50 section which enables a member to pay half rate contributions for half the benefits. The LGPS is a career averaged revalued scheme (CARE), which means your benefits are based on your salary for each year you are in the scheme. Your contribution rate, based on your salary, is 8.5%



Holiday Entitlement

You will be given a generous holiday entitlement of 222 hours (equivalent of 30 days). These amounts are pro-rated for part-time hours.



Car Parking

Free car parking for work



Private Medical Insurance

Subsidised private medical insurance for employees on Grade H and above on application



Shared Cost AVC's

LGPS members have access to our Shared Cost Additional Voluntary Contribution (Shared Cost AVC) scheme, which offers you a cost-efficient way to invest in your financial future.



Professional Membership Fees

The cost of one membership a year to a professional organisation that you require for your job



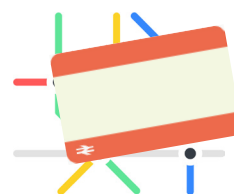
Car Loan

A loan to assist you with buying a car, subject to certain criteria being met



Season Ticket Loan

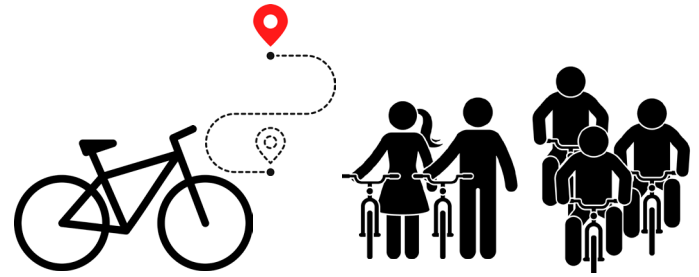
An interest free loan to assist with the purchase of a season ticket to travel to and from work



Total Reward Package

Cycle to Work

A salary sacrifice arrangement which allows employees to purchase a bicycle for travel to work. The scheme allows the cost to be spread over a monthly deductions and also reduces the employee's tax and national insurance costs.



Hybrid Working

A Hybrid Working Policy which allows you to work part of your week remotely (depending on role and in agreement with your line manager)



Flexi-Time Working

A flexi-time working scheme (in agreement with your line manager)



Wellbeing

We have achieved the national Workplace Wellbeing Charter accreditation demonstrating our commitment to proactively championing a health workplace culture.



Employee Assistance Programme

Access to a free and confidential Employee Assistance Programme which offers support for a wide range of issues including telephone and face to face counselling



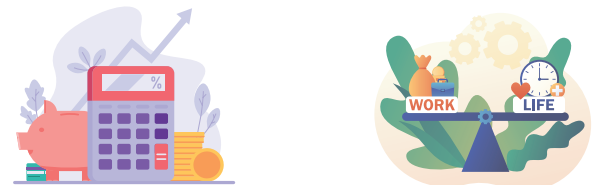
Occupational Healthcare

An occupational health service to support employees in the management of health issues.



Occupational Sickness Pay

Generous sick pay based on length of service



Total Reward Package

Flu Vaccinations

Free flu vaccinations on an annual basis



Eye Care

Assistance with the cost of an eye test and glasses or contact lenses for working with computer screens



Fairfield Leisure Centre Discount

20% discount on Premium Membership



Employee Benefits Portal

A host of benefits, deals and offers via our online benefits portal including, but not limited to, shopping, travel and activities



Family Friendly Policies

An enhanced package of Maternity, Adoption, Paternity, Parental, Shared Parental and Parental Bereavement Leave



Compassionate Leave

Up to 10 days paid leave following the death of a close relative



Cadet and Reserve Armed Forces Leave

Up to 10 days paid leave per year to take part in duties or training.



Public Duty Leave

Additional leave for members of certain public bodies to undertake duties



workplace
wellbeing
CHARTER

DARTFORD
BOROUGH COUNCIL

Job Profile

Job Title: Planning Strategy Lead

Grade: K

Reporting to: Planning Strategy & Infrastructure Manager

Responsible for: Principal Policy Planner (Senior Policy Planner) / Planning Strategy Officer

Experience:

Significant experience of planning strategy and infrastructure, including through preparation of Development Plans or infrastructure policy (or similar), or strategic development management.

Working knowledge required of:

- National planning policy. Local plan and environmental legislation.
- Community Infrastructure Levy (CIL), and/ or Section 106/ developer contribution legislation and policy, and/or Infrastructure Funding Statements/ Infrastructure Delivery Plan preparation.
- Development viability issues or delivery of sites through infrastructure interventions.
- Infrastructure delivery or local authority financial monitoring.

Specialist Knowledge:

- Experience of programming, delivering and justifying (for example examination in public: lead witness) local plans, or regional or county planning or infrastructure strategies.
- Experience of formulating/ implementing (CIL) charging schedules or Section 106 policies for infrastructure delivery, or public infrastructure governance and expenditure.
- Experience of operating in a political or sensitive institutional environment, evidencing and formulating policy-based recommendations on large scale strategic and financial decisions.
- Experience of supervising staff.
- IT literate, including software, digital analysis or spreadsheets for financial and development monitoring

Qualifications:

- Degree level qualification in Town Planning, related subject or a degree demonstrated to be relevant,
- Membership of the Royal Town Planning Institute or Royal Institute of Chartered Surveyors, or eligibility for membership; or alternative professional body of equal relevance and status.
- **Desirable:** applicable postgraduate qualification.

Special Circumstances:

- Limited attendance at meetings outside normal office hours.
- Attendance at meetings away from the Civic Centre

Key activities:

- To lead a team and be responsible for the delivery of a programme for planning strategy and infrastructure policy development, including new Local Plan/ supplementary policies and maintaining supporting documents/ guidance for infrastructure/ transport strategy.
- To review on an ongoing basis the spatial strategy options for Borough development together with investigation of transformative infrastructure to further sustainable growth and corporate objectives.
- To advise proactively on key Dartford infrastructure planning/ CIL and planning strategy.
- To ensure the Council maintains an effective CIL Charging Schedule, and other Dartford CIL policies, and prepare and regularly update an Infrastructure Delivery Plan.
- To develop and sustain effective working relationships with a range of infrastructure providers, ensuring proper consideration of Local Plan growth and determining the infrastructure implications of service provider plans and development of the Borough; and provide advice on where CIL funding might be suitable to support infrastructure delivery.
- To assess CIL expressions of interest and strategic infrastructure bids and report as necessary.
- To input to and guide application of the Spatial Development Strategy and regional/ county infrastructure strategies.
- To manage the Council's Neighbourhood CIL/ planning services, including unparished CIL partnerships and processes, and lead engagement with Parish Councils on neighbourhood planning and their CIL income and project delivery.
- To ensure up to date systems are in place to optimise reporting of CIL expenditure and project monitoring, and prepare the annual Infrastructure Funding Statement.
- To ensure the integration, modernisation and digitisation of development and infrastructure monitoring and data reporting.
- To support Development Management in the consideration of key planning applications considered by the Council and other organisations (eg NSIPs, other Borough, appeals) including those related to or providing strategic infrastructure and transport, and take part in appeals, including at Public Inquiry where required.
- To act as spending officer as deemed appropriate by the Head of Planning Services, for specific planning strategy and infrastructure planning.
- To deputise for the Strategic Planning and Infrastructure Manager in their absence.
- To carry out other duties consistent with the role, including (but not exclusively) dealing with service complaints; requests for information (FOI and EIR);



This, together with the competency levels is a description of the job as it is at present constituted. It is the practice of this Council to periodically review and update them to ensure that they relate to the job as then being performed, or to incorporate whatever changes are being proposed. You will be expected to participate fully in any discussions and, in connection with them, to re-write your job profile to bring it up-to-date if this is considered necessary or desirable, and to discuss it with your immediate superior. It is the Council's aim to reach agreement on reasonable changes, but if agreement is not possible the Council reserves the right to insist on changes to your job description after consultation with you. As a term of your employment you can be required to undertake such other duties commensurate with your grade, and/or hours of work, as may reasonably be required of you. All aspects of the post are to be carried out in compliance with the Council's overall Policies and Procedures, and all post holders will frequently have access to confidential information and will maintain such confidentiality as required by the Council.



workplace
wellbeing
CHARTER

DARTFORD
BOROUGH COUNCIL